

GET A HEAD START ON YOUR PEERS

#03

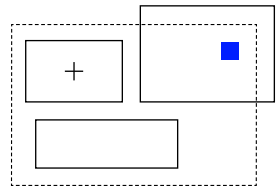
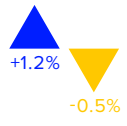


— IBM
— AMZN
— XAU

W O R K S P A C E



WITH REFINITIV WORKSPACE



Designed for students, Refinitiv® Workspace brings financial intelligence into academic institutions, powering a tailored best-in-class, more interactive learning experience.

Maximize applied learning with the richness of our real-world market data, a powerful mix of news and unrivaled content coverage with cutting-edge Web technology that is fast, light and intuitive.

Academic institutions can benefit from:

- The latest Web browser technology; a significantly lighter install that reduces deployment time and cost
- Intuitive navigation and more powerful structured and natural language search
- Wealth of best-in-class content, news and research
- Single sign-on for a truly tailored user experience
- Seamless mobile access whether at home or on campus
- Automated license management capabilities to support administrators
- An open and agile API to drive innovation

Boost your learning, become certified and stand out as you transition into the workforce

Enhanced multi-platform experience

Whether on campus or at home, students can continue their learning seamlessly accessing Refinitiv Workspace from their preferred device and on their personal desktop or tablet via workspace.refinitiv.com/web.

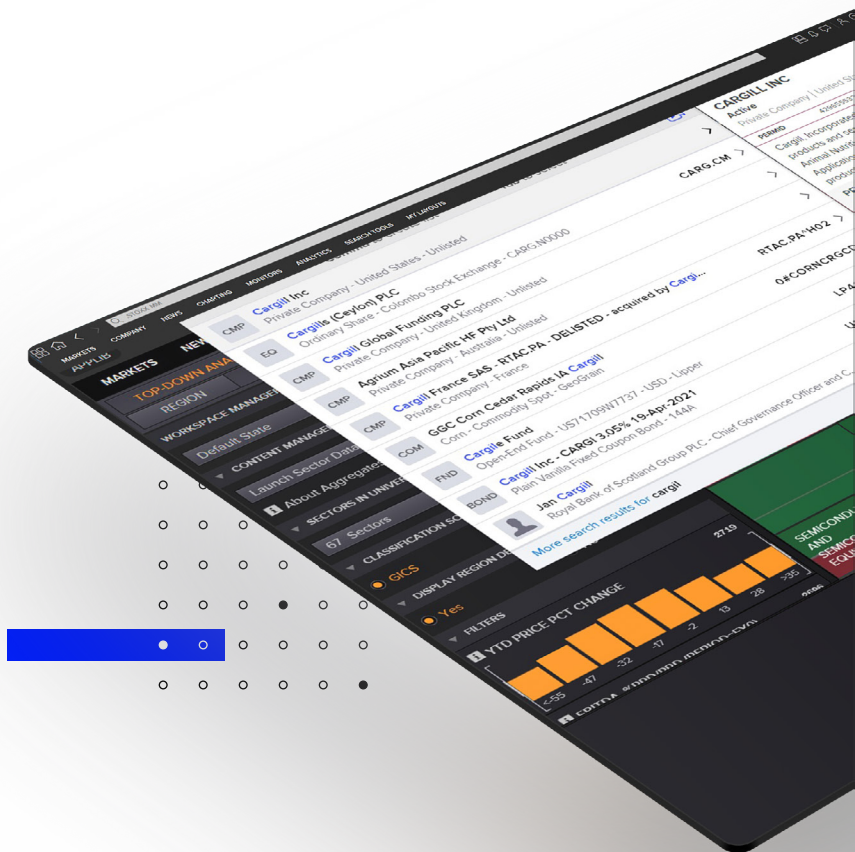
Single sign-on and license management capabilities

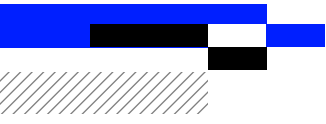
Automated administration tools and tracking will help administrators manage licenses effectively and easily without resource constraints as students join and leave their academic institutions.

And with single sign on (SSO) and unique user ID, students will be able to save searches, preferences and language settings, then sign off and pick up exactly where they left off without having to start all over again.

Speed up your research with AI-powered search and snapshot previews

AI-powered intelligent search ensures students find what they are looking for straightaway, to boost their research and learning. Snapshot previews enable students to access the content they are looking for, without even having to click search.





Open and agile

Students can conduct deeper data modeling and analysis with modern APIs and popular languages like Python, broadening their knowledge of the markets. They can also access raw data, extract it and build it into models and applications to drive innovation and advance their research.

Richness of real world data

With unmatched coverage of exclusive and breaking news and a wealth of best-in-class data and research across industries and geographies, we bring you all the content you need to maximize your learning.



Refinitiv is one of the world's largest providers of financial markets data and infrastructure, serving over 40,000 institutions in approximately 190 countries. It provides leading data and insights, trading platforms, and open data and technology platforms that connect a thriving global financial markets community – driving performance in trading, investment, wealth management, regulatory compliance, market data management, enterprise risk and fighting financial crime.

Visit refinitiv.com

@Refinitiv Refinitiv

REFINITIV[®]
DATA IS JUST THE BEGINNING[®]